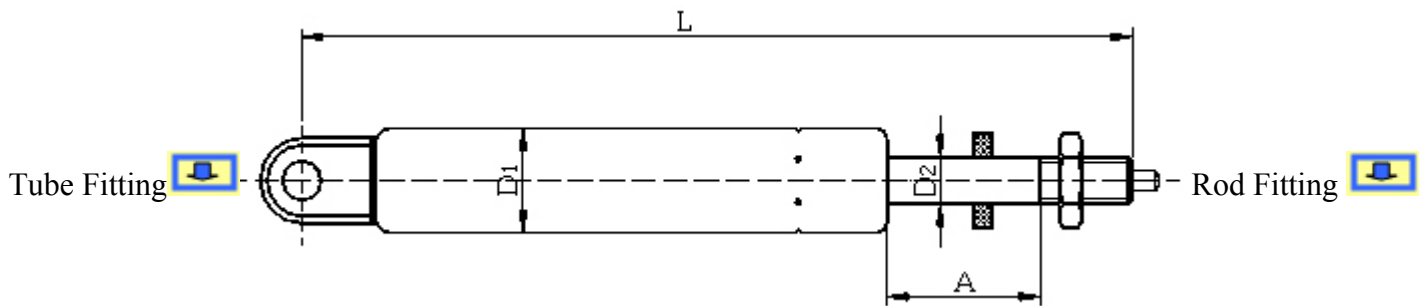


## Flexible Block -lift

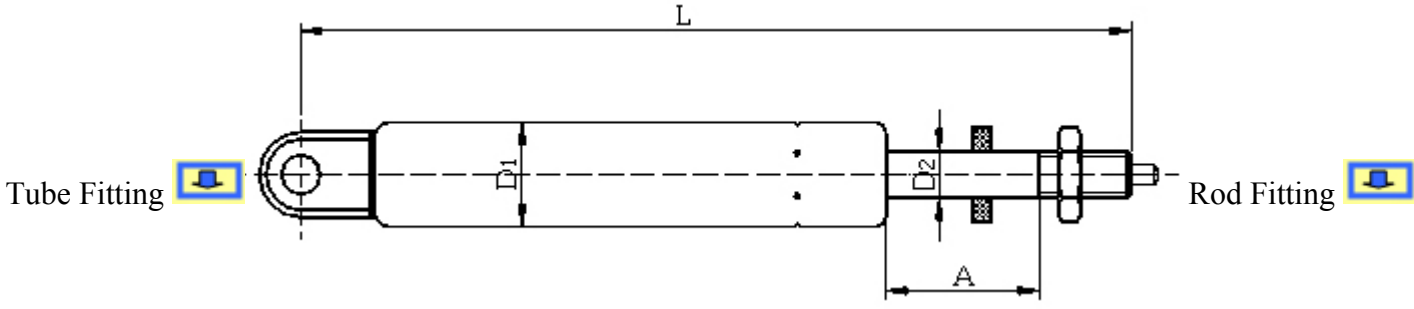


L	:	<b>Open Length</b>
A	:	<b>Stroke</b>
D 2	:	<b>Piston rod diameter</b>
D 1	:	<b>Tube diameter</b>
F	:	<b>Force (F 1)</b>

TYPE		L		A		F	
D1	D2	Min.	Max.	Min.	Max.	Min.	Max.
22	10	150	500	10	200	50 N	600 N
27	10	200	800	20	350	200 N	1500 N



# Rigid Block- lift

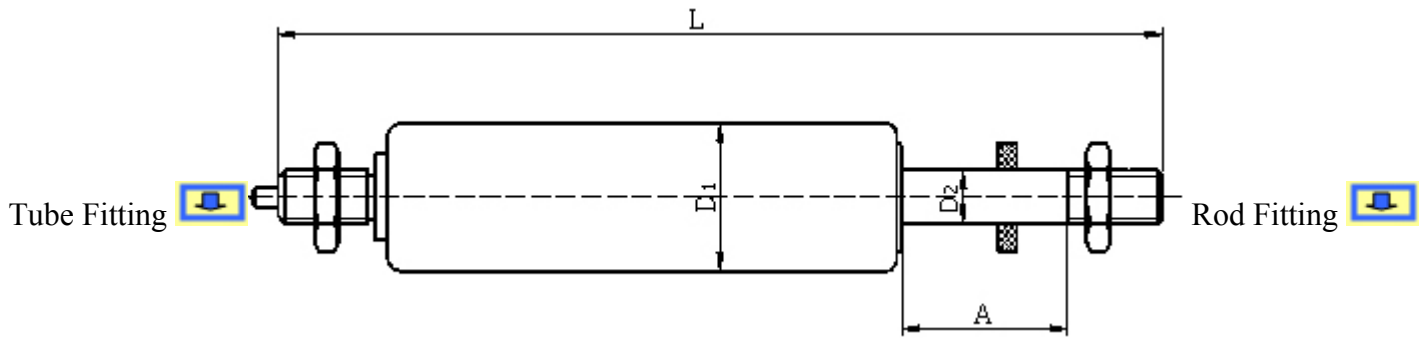


- L : **Open Length**
- A : **Stroke**
- D 2 : **Piston rod diameter**
- D 1 : **Tube diameter**
- F : **Force (F 1)**

TYPE		L		A		F	
D1	D2	Min.	Max.	Min.	Max.	Min.	Max.
22	10	150	500	10	200	50 N	600 N
27	10	200	800	20	350	200 N	1500 N



## BLOCK LIFT (BEHIND WITH PIN)

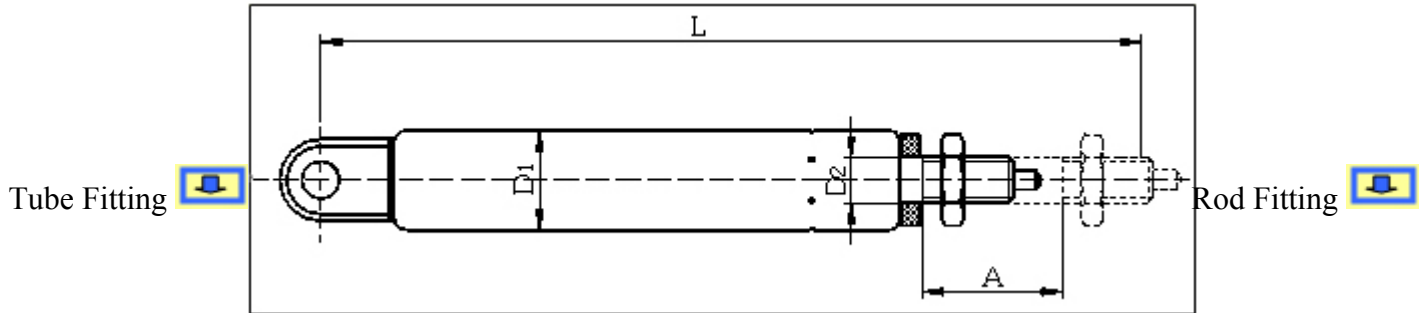


- L : **Open Length**
- A : **Stroke**
- D 2 : **Piston rod diameter**
- D 1 : **Tube diameter**
- F : **Force (F 1)**

TYPE		L		A		F	
D1	D2	Min.	Max.	Min.	Max.	Min.	Max.
22	10	230	1000	50	400	130 N	800 N
28	10	230	1000	50	400	130 N	1500 N



## TRACTION SPRING BLOCK-LIFT

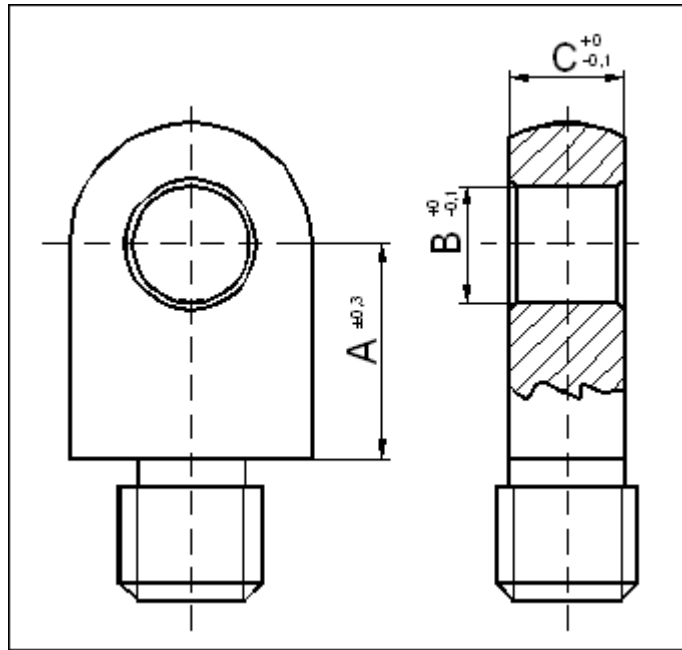


- L : **Open Length**
- A : **Stroke**
- D 2 : **Piston rod diameter**
- D 1 : **Tube diameter**
- F : **Force (F 1)**

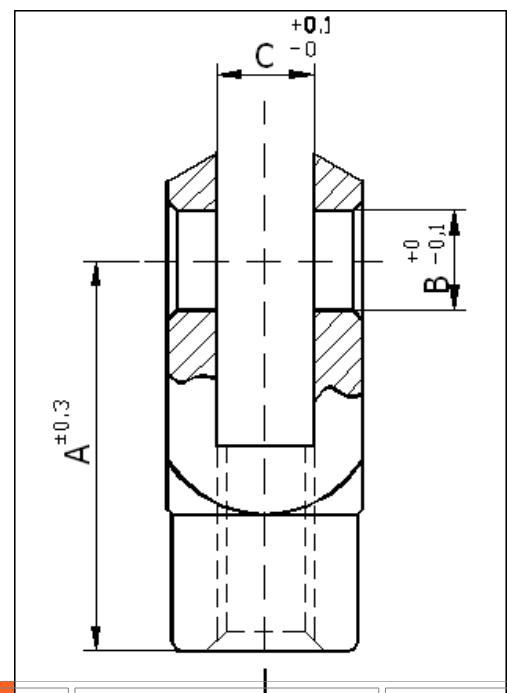
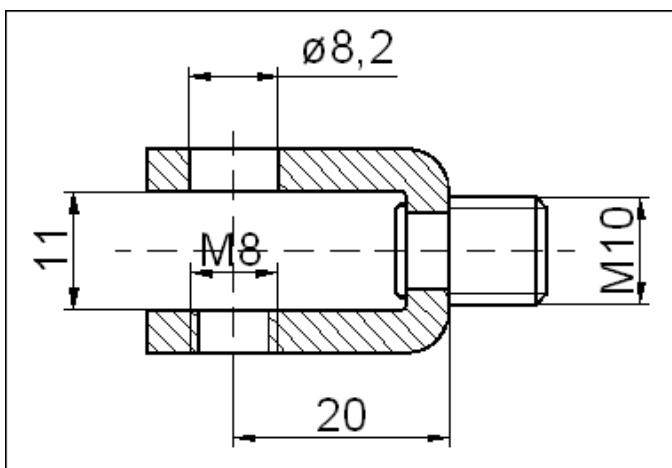
TYPE		L		A		F	
D1	D2	Min.	Max.	Min.	Max.	Min.	Max.
27	10	200	800	20	350	200 N	1500 N



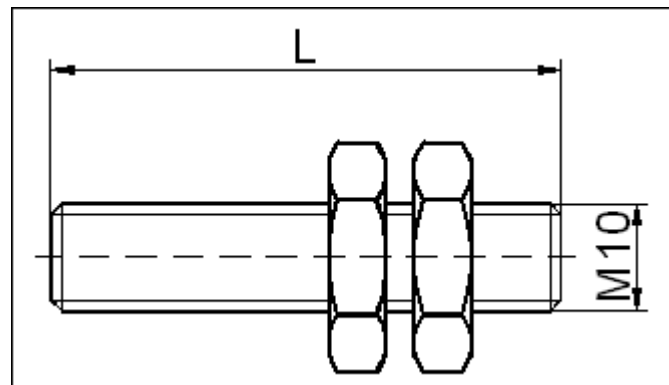
## Tube fitting



A	B	C	A	B	C	A	B	C
15	8,2	8	17	8,2	8	20	8,2	8
15	8,3	8	17	8,3	8	20	8,3	8
15	10,2	8	17	10,2	8	20	10,2	8
15	8,2	10	17	8,2	10	20	8,2	10
15	8,3	10	17	8,3	10	20	8,3	10
15	10,2	10	17	10,2	10	20	10,2	10
15	8,2	12	17	8,2	12	20	8,2	12
15	8,3	12	17	8,3	12	20	8,3	12
15	10,2	12	17	10,2	12	20	10,2	12



A	B	C	A	B	C
40	8,2	10	60	10,2	10

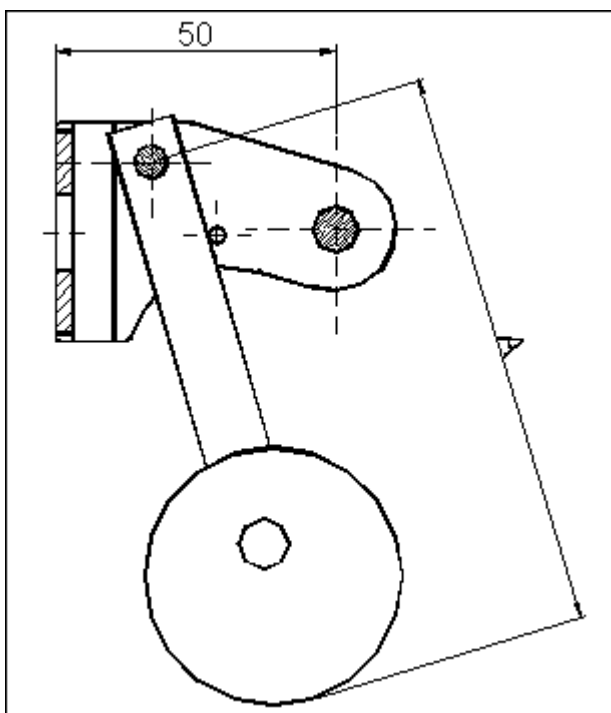
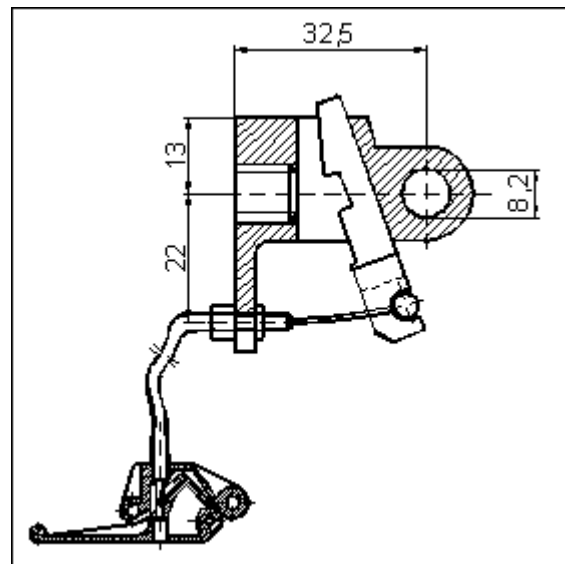


L

47

55

### Rod Fitting



A

143

243